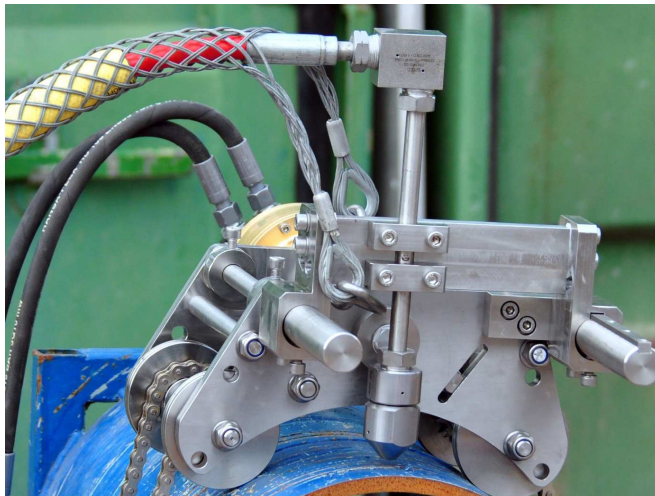



Chain Manipulation System EX



The ANT Chain manipulation System can be operated in conjunction with our MACE, our AMU-1500 and our AMU-2500 with an allowed maximum cutting pressure of 2380 bar and special cutting sand (Abrasive). With this system it is possible to open and to separate pipelines filled with an explosive atmosphere belonging to the explosion group I and IIA (i. e. methane, propane, gasoline) according to IEC 60079-20-1. The System was type-tested and certified by German Notified Body (NB 0589) BAM Federal Institute for Materials Research and Testing, Berlin. EC Type-Examination Certificate Number:

BAM 13 ATEX 0101 X

Parameters

Marking	 II 1G/3G IIA T 4
Application	Suitable for pipelines filled with an explosive atmosphere belonging to the explosion group I and IIA (i. e. methane, propane, gasoline) according to IEC 60079-20-1.
Maximum Operating Pressure	2380 bar
Maximum Wall thickness	40 mm
Nozzle Size	0,6 mm
Cutting Angle	Up to 30 degrees for preparation

Traction Engine

Traverse speed	continuously variable from 25-500 mm/min (1-20 inch/min) via hydraulic motor OMM 20
Gear box	harmonic drive
Weight	20 kg (45 lbs)
Size (L x W x H)	400 x 200 x 300 mm (16 x 8 x 12 inch)

Chain

Outside diameter	200-1500 mm (8-60 inch)
------------------	-------------------------

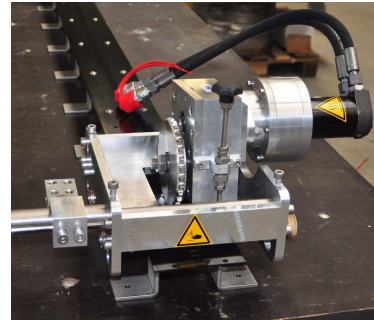
Hydraulic Power Unit

suitable for use with Chain Manipulation System EX

Pump	gear pump
Tank capacity	30 l (8 US.liq.gal)
Pressure	150 bar (2200 PSI)
Flow	11 l/min (3 US.liq.gal/min)
Control unit	1. manual operated valve (forward-stop-back) 2. manual operated valve (fast-neutral-slow) pressure-compensated flow-control valve, 2 off
Drive	electric 4 kW/400 V/16 A

Linear Manipulation System

The Linear Manipulation System can be used in combination with all our Abrasive Mixing Units. This equipment is ideal for straight cuts and convinces with its high flexibility.



Traction Engine

Gear box	harmonic drive
Accessories	fixed guide rail, l = 2.44 m (8 ft) spacer (7 pcs) nozzle positioner
Weight	16 kg (36 lb)
Size (L x W x H)	400 x 200 x 300 mm (16 x 8 x 12 inch)
Traverse speed	continuously variable from 25*-500 mm/min (1*-20 inch/min) via hydraulic motor OMM 20

* Traverse speed from 10 mm/min (3/8 inch/min) may be achieved with hydraulic motor OMM 50, which is available as an option.

Note: Imperial/US measurements are for information only

Flexible Guide

Length	approx. 2.44 m (8 ft)
Inside / Outside diameter	min. 1000 mm (40 inch)
Accessories	conversion kit for flexible guide rail spacer (11 pcs)

Hydraulic Power Unit

Pump	gear pump
Tank capacity	30 l (8 US.liq.gal)
Pressure	150 bar (2200 PSI)
Flow	11 l/min (3 US.liq.gal/min)
Control unit	1. hand valve (forward-stop-back) 2. hand valve (fast-neutral-slow) pressure-compensated flow-control valve, 2 off
Drive	electric 4 kW/400 V/16 A
Cable Length	2 m (6.5 ft)
Hose	DN 8, 25 m (82 ft), max. 100 m (328 ft)
Weight	power pack: 102 kg (225 lb) control unit: 71 kg (157 lb) hydraulic hose 10 m(33 ft): 5 kg (11 lb) hydraulic hose 25 m(82 ft): 10 kg (22 lb)
Seize (L x W x H)	power pack: 630 x 600 x 1200 mm (25 x 24 x 47 inch) control station: 740 x 600 x 1200 mm (29 x 24 x 47 inch)
Options	battery operated flowmeter

ANT Applied New Technologies AG
Hinter den Kirschkatzen 32
23560 Lübeck
Germany

Tel. +49 (0)451-5 83 80 - 0
Fax +49 (0)451-5 83 80 - 99
E-Mail: info@ant-ag.com
<http://www.ant-ag.com>

